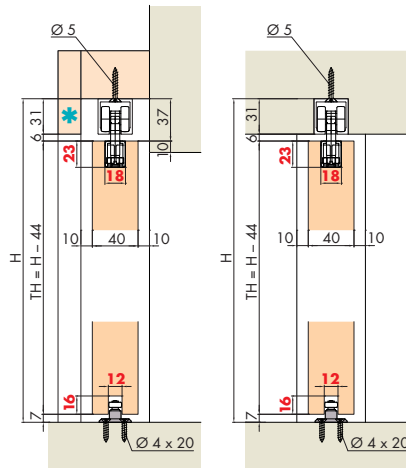
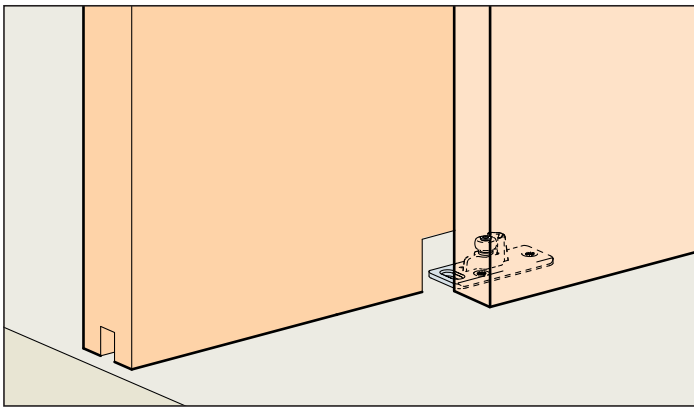


System: Laufschiene für Deckenmontage, Einbau in der Tasche, für 1 Holztüre bis 60/100 kg.

System: Running track for ceiling mounting, door mounted in a pocket, for 1 wooden door up to 60/100 kg.

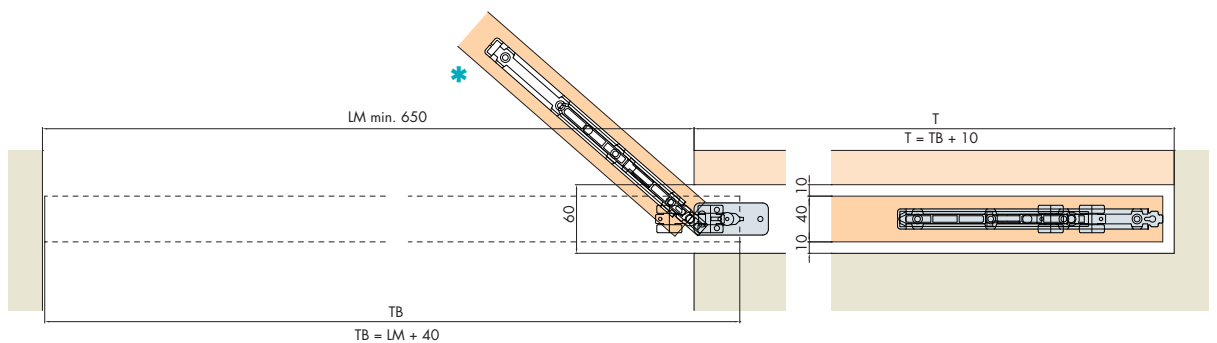
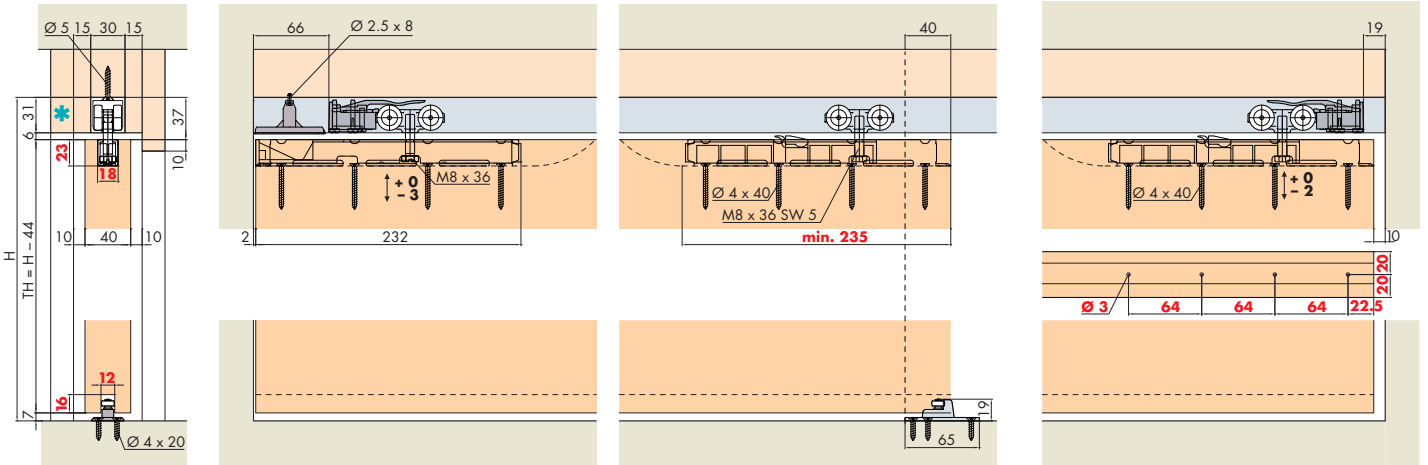
Système: Rail de roulement pour montage au plafond, porte escamotable, pour 1 porte en bois jusqu'à 60/100 kg.



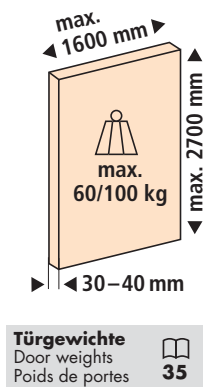
* Für das Ein- und Ausschwenken darf eine Blende bis max. an die Unterkante der Schiene reichen.

At least one of the panels must end at the lower edge of the running track in order to be able to swivel the door inwards and outwards.
Pour que le pivotement puisse s'effectuer, un cache pourra au maximum atteindre le bord inférieur du rail.

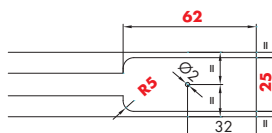
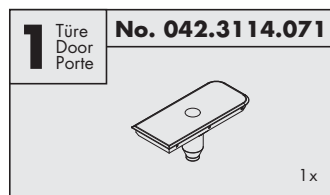
Einbaubeispiele / Mounting examples / Exemples de montage



Türbearbeitung = rote Zahlen / Door treatment = red numbers / Traitement de portes = numéros en rouge



Garnituren / Sets / Garnitures



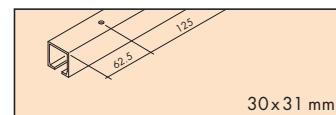
EKU-PORTA 60/100	
1 Türe Door Porte	60 No. 057.3133.074 100 No. 057.3133.073
1x	1x
2x	2x
1x	1x
1x	1x

Zubehör / Accessories / Accessoires

Einfachlaufschiene, Alu, gelocht

Running track, aluminium, pre-drilled
Rail de roulement, en alu, perforé

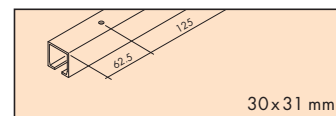
Gr./Size	Art. No.
1500 mm	057.3016.150
1700 mm	057.3016.170
2000 mm	057.3016.200
2500 mm	057.3016.250
6000 mm	057.3016.600



Einfachlaufschiene, Alu eloxiert, gelocht

Running track, aluminium anodized, pre-drilled
Rail de roulement, en alu anodisé, perforé

2000 mm	057.3016.201
2500 mm	057.3016.251
6000 mm	057.3016.601



Demontageschlüssel

Removal key
Clé de démontage

042.3119.101

